



Important Information

Operating a business or regulated activity without all necessary licenses and permits

It is a violation of City Code to operate a business, including the rental of residential and commercial properties, without securing all necessary permits and approvals. A Business Tax Receipt must be obtained and properly displayed prior to operating.

Home businesses that impact the surrounding community are prohibited. Examples of prohibited home businesses are physical fitness and personal training services, import/export business, and any other business that negatively affects the traffic flow and quality of life of the surrounding residential homes.



Code Compliance

Code Compliance is the prevention, detection and investigation of City Code violations that affect public health, safety, welfare, business activities, building standards, land-use, or municipal affairs. City Ordinances are in place to protect our health, safety and quality of life. They also protect and enhance our property values. The Code Compliance process regulates certain components of the Building, Fire, Zoning and Property Maintenance Codes.

The Division of Code Compliance dedicates its resources to maintain the health, safety and quality of life for our residents and business partners.



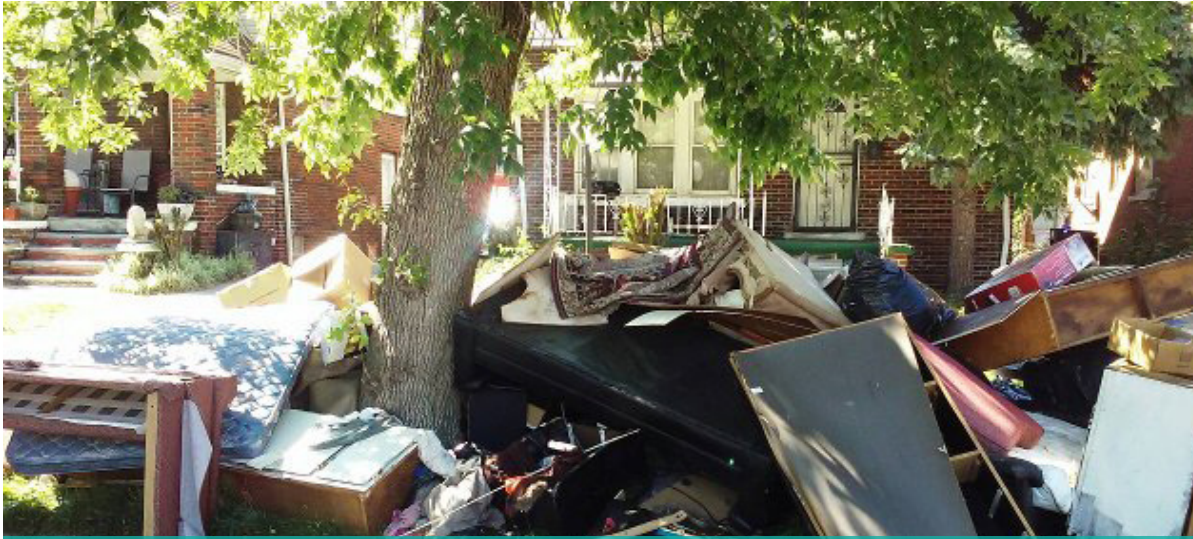
Deerfield Beach
Florida

What is Code Compliance?



Code Compliance plays a vital role in our community...

Learn the Do's and Don'ts



Common Code Violations

Storage of Junk, Trash, Debris and Other Materials

It is a violation of City Code to store any unauthorized accumulation of junk, construction debris, garbage, horticulture material, refuse, discarded or unused objects, or equipment, including but not limited to furniture, stoves, refrigerators, freezers, tires, cans or containers.

Overgrowth of Grass, Weeds and Landscaping

It is a code violation to allow grass or weeds in excess of 12 inches in height from the ground up on any property.

Parking of vehicles on unapproved surfaces

It is a code violation to park or store vehicles, recreational vehicles or trailers on the front lawn. Off-street parking is only permitted on approved hard and dustless surfaces (meaning your driveway only).

Junk and Abandoned Vehicles

The storage of any wrecked, dismantled, partially dis-

mantled or inoperable vehicle is prohibited. A vehicle is considered to be inoperable if it is stored or parked without having all wheels mounted with all tires inflated, or if it has an expired license tag.

Trees encroaching into Neighbor's yard

It is the property owner's or tenant's responsibility to maintain their trees so as not to encroach upon any adjacent property without permission from the property owner.

Storage of items and materials in front yard (in plain view)

It is prohibited to store items, materials, or other objects in the front yard of a residential dwelling. Storage containers in the front yard are also prohibited.

Building Permits

Permits are required for most interior, exterior renovations, any remodeling, installation of fencing, windows, shutters, doors, sheds and additions to an existing home.

Garbage Collection Regulations

Garbage receptacles shall not be placed for collection earlier than 4:00 p.m. on the day prior to the scheduled collection day. All garbage containers from which the contents have been collected shall be relocated to their proper location prior to 8:00 a.m. the following day.

Bulk Trash & Landscape Debris

Bulk trash, grass and tree clippings are to be placed at curbside for collection prior to 7:00 a.m. the morning of collection. Bulk trash is not allowed to be placed on curbside more than 24 hours from collection time. Bulk and regular garbage should not be placed together in one pile.

Building Exterior Maintenance

It is a violation to maintain a property in a state of disrepair. All walls, windows, doors, roofing elements, fences as well as decorative and structural elements must be kept in good state of repair.

Commercial vehicles parked in residential areas

No commercial vehicles higher than nine (9) feet and longer than 20 feet and commercial vehicles that have equipment stored on it (ladders or other attachments) which exceed the height of the highest point on the vehicle by more than two feet are allowed. Commercial vehicles must be parked on a paved driveway or a parking space.

Sidewalks, Driveways, Connections & Swales

Although the approach in front of your property is on the City's right-of-way, it is the duty of the owner to maintain the swale in good condition and to repair the paved driveway connection when needed.

For more on the City Codes, visit www.dfb.city or call 954.480.4241.